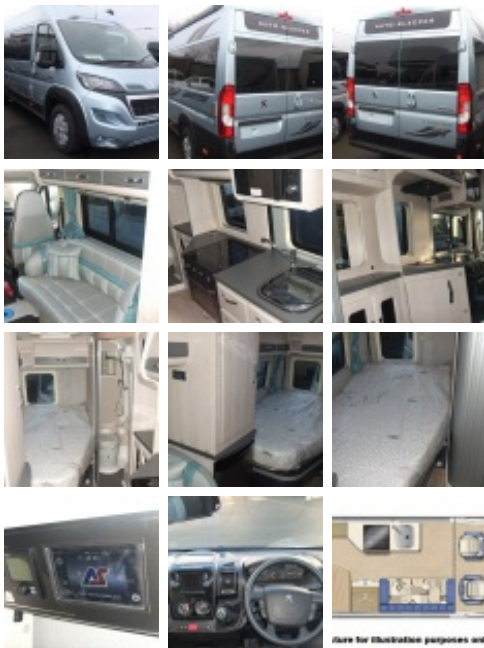


Auto-Sleepers Kingham



Sale Item was ~~£58,995~~, Now:- **£56,200**

Year:	2019 new & unregistered
Number of Berths:	2
Engine Size:	2.0 Litre BlueHDi 160bhp
Fuel Type:	Diesel
Width:	2.26 Metres
Height:	2.64 Metres
Length:	6.36 Metres
Gross Weight:	3500 kgs

2.0ltr 160bhp Boxer based

Fixed bed, 2 berth van conversion

Free Premium Pack

Free Winter Pack

The Kingham is a fantastic 2 berth van conversion, comprising large fixed rear lift-up French bed with deployable backrest, washroom with toilet and shower, fully featured kitchen and sofa seating to the front

Additional feature : Status TV aerial

Main features

- ➡ Peugeot Boxer 2.0ltr 160bhp Euro 6
- ➡ "Azzuro Blue" paintwork
- ➡ "Limewash Oak" furniture
- ➡ "Sagrada Blue" upholstery
- ➡ Remote central locking (inc habitation)
- ➡ Electric heated/adjustable door mirrors
- ➡ Electric cab windows
- ➡ Driver & passenger airbags
- ➡ LED daytime running lights
- ➡ Rear fog lamps
- ➡ Spare wheel on carrier
- ➡ 3 way fridge with freezer
- ➡ 3 burner hob
- ➡ Oven / grill
- ➡ Microwave
- ➡ Sink
- ➡ Exterior 230V mains socket
- ➡ Exterior BBQ socket

➡ Exterior TV socket

➡ **Sargent Cat6 tracker**

Premium Pack Upgrade (comprising)

➡ Alloy Wheels

➡ Cab air conditioning

➡ Cruise control

➡ Thule (Omnistor) canopy awning

➡ Colour reversing camera & LCD Screen

➡ Peugeot DAB radio with Integrated navigation

➡ AL-KO air top suspension

➡ 80W solar panel

Winter Pack (comprising)

➡ Fresh & waste water tank heater blanket

➡ Concertina cab blinds (in lieu of cab curtains)

➡ Truma Combi heater upgrade

➡ Wheel arch insulation blankets