

Auto-Sleepers Broadway EK TB LP



Sale Item was ~~£39,995~~, Now:- **£SOLD**

Year:	2013
Number of Berths:	2
Engine Size:	2.2ltr 130bhp
Fuel Type:	Diesel
Width:	2.32 Metres
Height:	2.97 Metres
Length:	6.28 Metres
Gross Weight:	3500 kgs

'13 plate, 2013 Boxer based

2.2ltr 130bhp coachbuilt

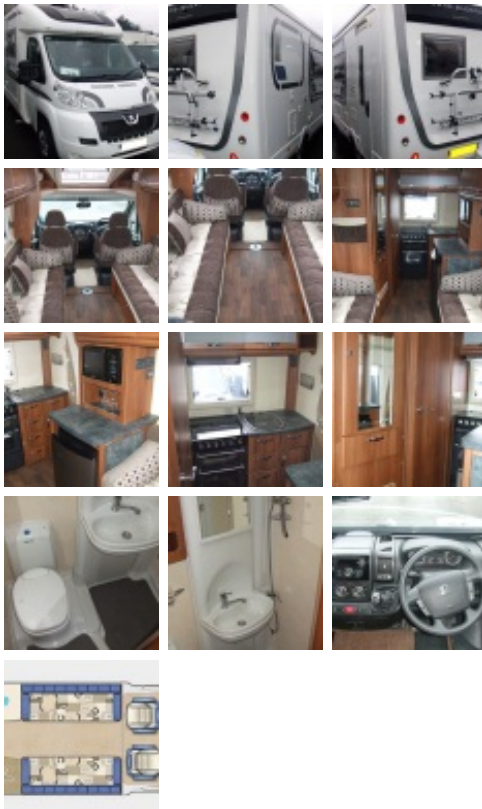
End kitchen, 2 berth

Under 16,000 miles

This one-owner, superb example of the EK TB LP couples a spacious, no compromise front lounge and a well-equipped end kitchen. The large lounge quickly converts to a choice between full-length singles or a generous double bed. Thewell appointed kitchen affords a full cooker with separate grill, dual fuel hob, microwave, 3 way fridge and sink. The washroom includes the spacious swingwall bathroom conversion.. It comes with many extras as detailed below.

Main Features

- ➡ Peugeot Boxer 2.2ltr 130bhp
- ➡ 6 speed manual gearbox
- ➡ CD / Radio
- ➡ Steering wheel controls
- ➡ Global remote central locking
- ➡ Driver & passenger airbags
- ➡ Electrically heated & adjustable door mirrors
- ➡ Electric cab windows
- ➡ "Crystal Mocha" upholstery
- ➡ Full single beds (converting to large double)
- ➡ "Swing Wall" shower & toilet compartment
- ➡ Electric flush cassette toilet
- ➡ Separate header tank
- ➡ End kitchen
- ➡ 3 way fridge
- ➡ Separate Oven & Grill
- ➡ Dual level microwave
- ➡ Dual fuel hob (3 Gas & 1 electric)
- ➡ 12 volt extractor fan with down-lighters
- ➡ External skirt storage locker
- ➡ 25 Litre liquid capacity LPG gas tank



- ➡ Spare wheel & carrier
- ➡ Rear corner steadies
- ➡ Cycle rack
- ➡ Thatcham Cat 1 alarm
- ➡ Cycle rack

Premium Pack Upgrade (comprising)

- ➡ Alloy Wheels
- ➡ Cruise control
- ➡ Cab air-conditioning
- ➡ Thule Omnistor wind-out awning
- ➡ Colour reversing camera
- ➡ 80 watt solar panel
- ➡ LED daytime running bulbs

Other Features

- ➡ Panoramic wind-up Heki roof-light
- ➡ External TV socket
- ➡ External gas BBQ point
- ➡ Multi directional Status TV aerial
- ➡ Electric entrance step
- ➡ Freestanding table
- ➡ Smoke & Carbon Monoxide alarms
- ➡ Fresh & waste water tanks
- ➡ Rear speakers
- ➡ **15,516 miles**