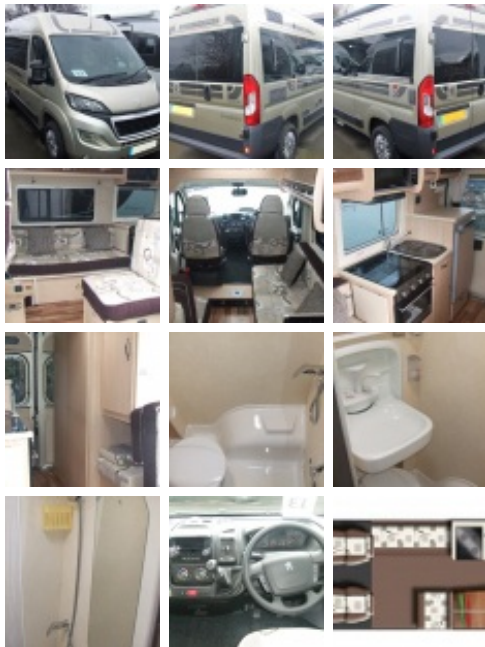


### Auto-Sleepers Symbol



Sale Item was ~~£40,995~~, Now:- **£SOLD**

Year:	<b>2015</b>
Number of Berths:	<b>2</b>
Engine Size:	<b>2.2ltr 150bhp</b>
Fuel Type:	<b>Diesel</b>
Width:	<b>2.26 Metres</b>
Height:	<b>2.64 Metres</b>
Length:	<b>5.41 Metres</b>
Gross Weight:	<b>3300 kgs</b>

'15 plate, 2015 Peugeot Boxer based

MWB van conversion

23,000 miles

A lovely one-owner example of the ever-popular iconic Auto-Sleeper Symbol. Compact but offering full versatility of use, The side-facing settee and single forward-facing belted seat convert to two single beds (utilising the cab seats) or a large double bed. The layout is completed by a large kitchen which includes a microwave and a spacious rear washroom.

#### Main features

- ➡ Peugeot Boxer 2.2 litre 150bhp
- ➡ 6 speed manual gearbox
- ➡ Golden White paintwork
- ➡ Moonstone Caramel upholstery
- ➡ Front fog lights
- ➡ Solar panel
- ➡ TV aerial

#### Winter Pack (comprising)

- ➡ Fresh & waste water tank heater blanket
- ➡ Concertina cab blinds [in lieu of cab curtains]
- ➡ Truma Combi heater upgrade
- ➡ Wheel arch insulation blankets

#### Premium pack (comprising)

- ➡ Alloy wheels
- ➡ Cab air conditioning
- ➡ Cruise control
- ➡ Manual roll-out canopy awning
- ➡ Colour reversing camera
- ➡ LED Daytime running lights
- ➡ AL-KO air top rear suspension
- ➡ 1 owner
- ➡ 23,368 miles