

Auto-Sleepers Warwick Duo (Auto)



Sale Item was ~~£47,995~~, Now:- **£Sold**

Year:	2014
Number of Berths:	2
Engine Size:	2.3 Litre 130bhp
Fuel Type:	Diesel
Width:	2.26 (less mirrors) Metres
Height:	2.64 (inc aerial) Metres
Length:	5.99 Metres
Gross Weight:	3500 kgs

'64 plate , 2014 model

Fiat Ducato Based, 2.3 130bhp

Automatic gearbox

Rear Lounge, van Conversion

12,000 miles

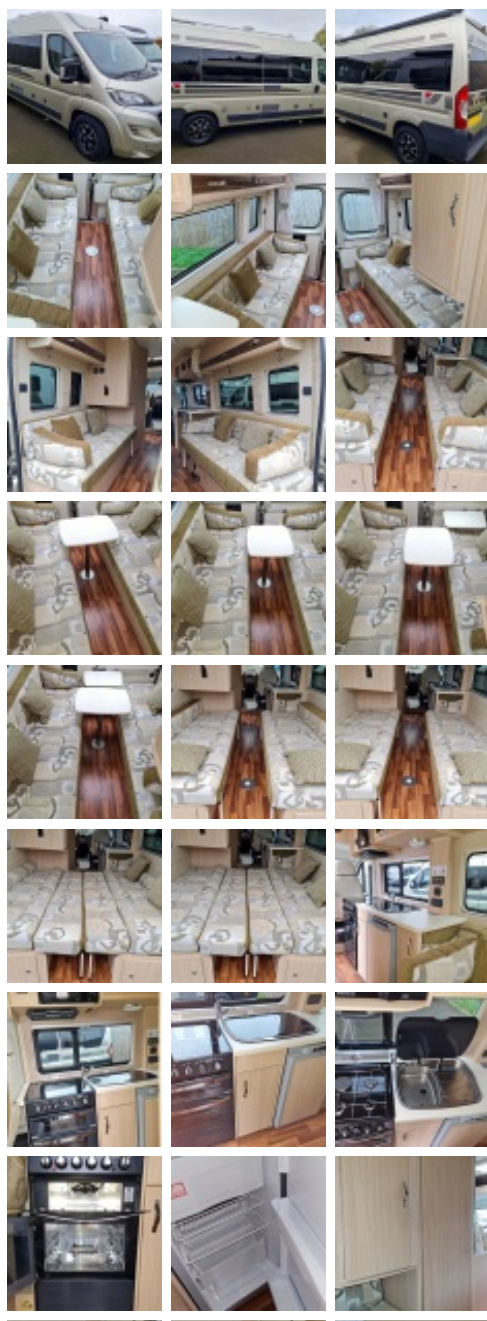
An excellent example of this popular rear lounge van conversion with the addition of a ComforMatic automatic gearbox. Layout consists of two rear bench seats (converting to 2 singles/1 double berth option) well appointed kitchen and good-sized washroom.

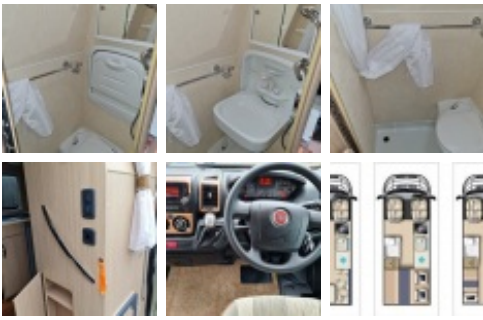
Main features

- ➡ Fiat Ducato 2.3 litre 130bhp
- ➡ **Automatic gearbox**
- ➡ 'Golden White' paintwork
- ➡ 'Crystal Olive' Upholstery
- ➡ 'Amarti' furniture
- ➡ Front & rear parking sensors
- ➡ Spare wheel & carrier (underslung)
- ➡ Spacious rear lounge
- ➡ 12160 miles

Other features

- ➡ Electric / heated cab mirrors
- ➡ Electric cab windows
- ➡ Integrated FIAT radio with bluetooth
- ➡ 20 litre liquid capacity LPG gas tank
- ➡ Colour-coded front bumper
- ➡ External BBQ socket
- ➡ External mains socket
- ➡ TV aerial





- ➡ Slide-out habitation step
- ➡ Removable habitation carpets throughout
- ➡ Habitation audio speakers in rear

Exterior sockets (including)

- ➡ Mains hook-up
- ➡ Gas BBQ
- ➡ Aerial
- ➡ Whale auto-filler
- ➡ Std water fill point

Kitchen (including)

- ➡ Dual fuel hob
- ➡ Oven (separate grill)
- ➡ 12V extractor hood
- ➡ 3-way fridge
- ➡ Microwave
- ➡ Sink

Bathroom (including)

- ➡ Electric flush cassette toilet
- ➡ Drop-down vanity sink
- ➡ Vanity cupboard
- ➡ Shower

Premium pack (comprising)

- ➡ Alloy Wheels
- ➡ Cab air conditioning
- ➡ Cruise control
- ➡ Thule (Omnistor) canopy awning
- ➡ Colour reversing camera
- ➡ Daytime running lights
- ➡ AL-KO Airtop suspension

Winter pack (comprising)

- ➡ Fresh & waste water tank heater blanket
- ➡ Concertina cab blinds (in lieu of cab curtains)
- ➡ Truma Combi heater upgrade
- ➡ Wheel arch insulation blankets