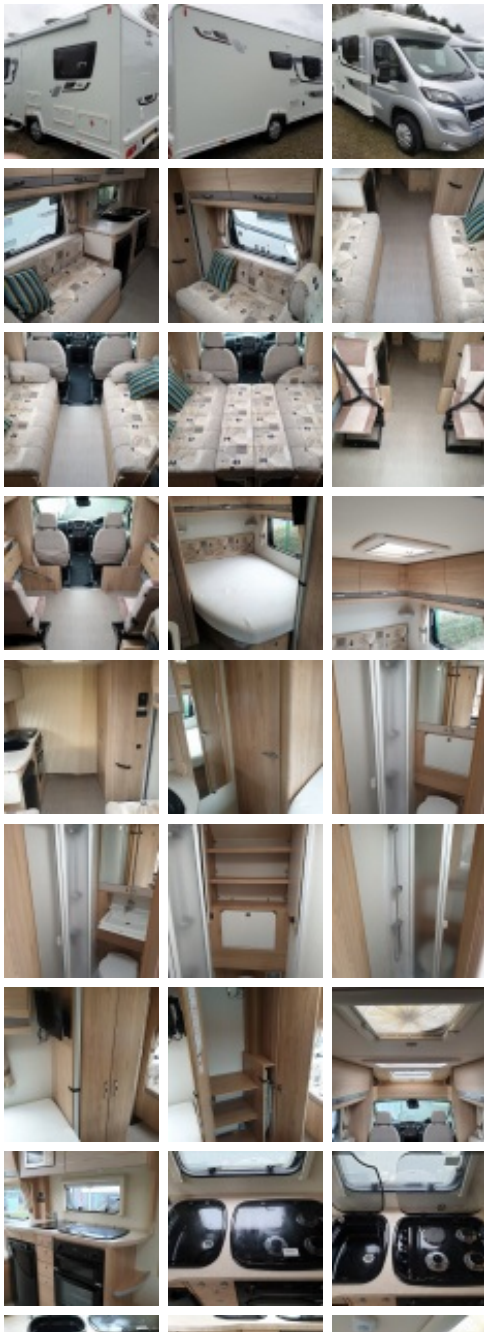


Elddis Majestic 155



£Sold

Year:	2015
Number of Berths:	4
Engine Size:	2.2ltr 100bhp
Fuel Type:	Diesel
Width:	2.20 (less mirrors) Metres
Height:	3.01 Metres
Length:	7.20 Metres
Gross Weight:	3500 kgs

'65 Plate 2015, Peugeot Boxer 2.2ltr

Fixed Rear Bed coachbuilt

6,000 miles

Largest of the 4 berth Majestic models. A lowline motorhome with a rear fixed bed and front lounge comprising two facing side benches that convert to two forward-facing belted seats or transverse double bed, this is complimented by fully appointed kitchen and large washroom. Very low mileage and in excellent condition.

Main features

- ➡ Peugeot Boxer 2.2ltr 150bhp
- ➡ 6 speed manual gearbox
- ➡ Thatcham cat1 alarm
- ➡ Thatcham approved tracker (requires subscription)
- ➡ Peugeot DAB media unit with integrated sat nav
- ➡ Driver & passenger airbags
- ➡ Remote keyfob central locking to cab
- ➡ Electric / heated cab mirrors
- ➡ Electric cab windows
- ➡ Automatic cab climate control
- ➡ Auto function headlights
- ➡ Cruise control
- ➡ Silver dashboard highlights
- ➡ Swivel driver & passenger seats
- ➡ Cassette cab blinds
- ➡ Front lounge (2 side-facing settees)
- ➡ 2 extra travelling seats
- ➡ Fixed rear French bed
- ➡ Opening cab sky roof
- ➡ Heki rooflight



- ➡ Room divider
- ➡ Removable carpets throughout
- ➡ Whale heating & water heating
- ➡ Manual roll-out canopy awning
- ➡ Electric habitation step
- ➡ Reversing camera
- ➡ Auto satellite dish (TV operated)
- ➡ TV aerial
- ➡ Towbar
- ➡ Fresh & waste water tanks

Kitchen (including)

- ➡ Oven with separate grill
- ➡ Dual fuel hob
- ➡ Dometic 3 way fridge
- ➡ Microwave
- ➡ Kitchen sink

Bathroom (including)

- ➡ Wet room with Thetford cassette toilet
- ➡ Drop-down vanity sink
- ➡ Vanity cupboard
- ➡ Shower
- ➡ **6,251 miles**